

28 Courtfields Elm Grove
Lancing, BN15 8PA

Guide price £140,000



28 Courtfields Elm Grove

Lancing, BN15 8PA

James & James Estate Agents are delighted to bring to the market this sought after CHAIN FREE one bedroom GROUND FLOOR retirement apartment positioned just a short walk to Lancing village.

Situated in Courtfields, the property offers independent living with communal residents facilities including a communal lounge, a laundry room and beautifully maintained communal gardens.

In brief, the accommodation comprises security entrance, entrance hall, lounge, kitchen, bedroom and a shower room. There is a door off the kitchen leading to a patio overlooking the communal gardens.

Service charge £1,600 pa
Council Tax Band A

Communal entrance

Entrance hall

Large storage cupboard

Lounge
12'11 x 11'5 (3.94m x 3.48m)

Inner lobby with airing cupboard

Bedroom with fitted wardrobe
12'9 x 8'1 (3.89m x 2.46m)

Bathroom

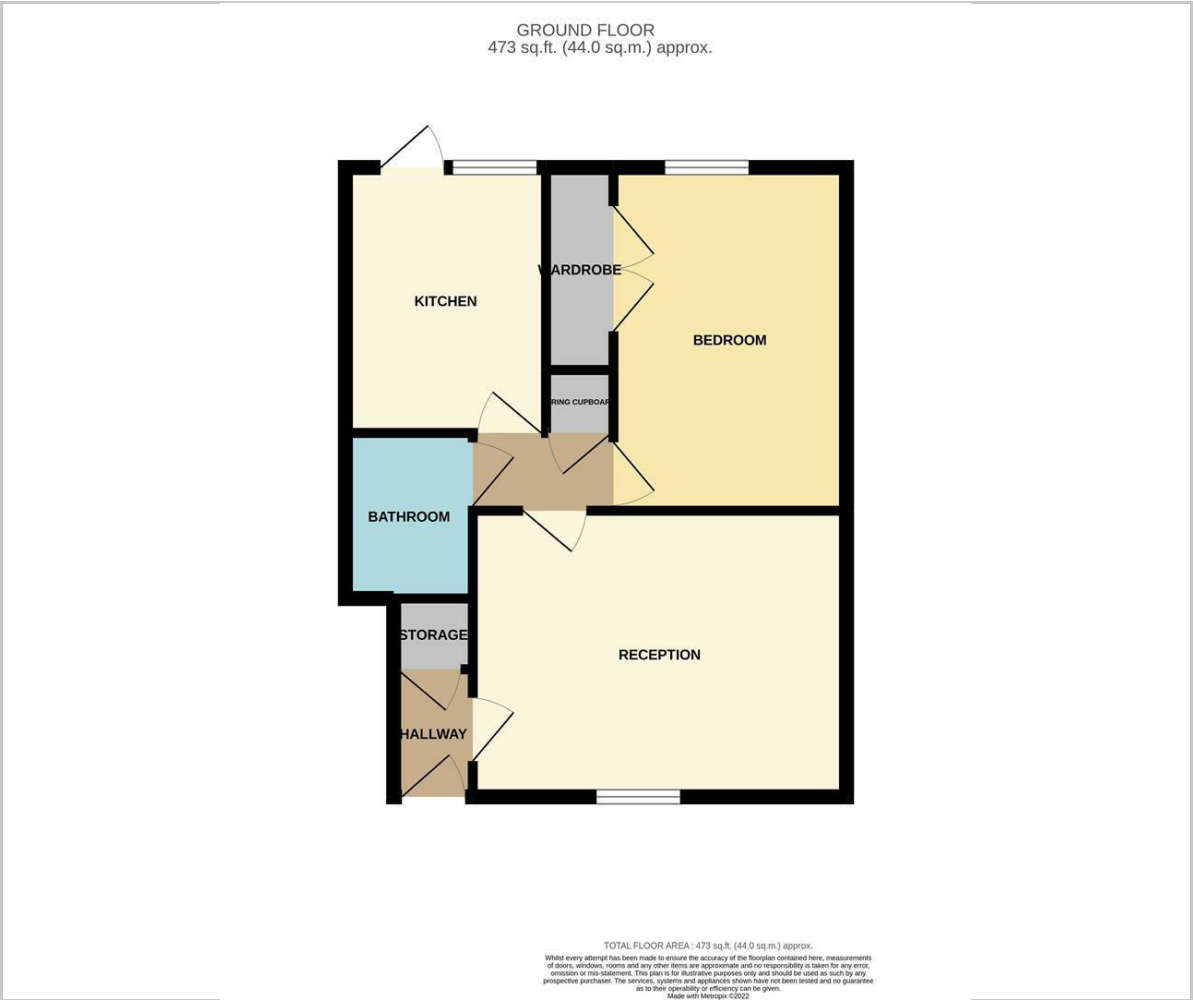
Kitchen/breakfast room
10'2 x 7'10 (3.10m x 2.39m)

Patio





Floor Plan

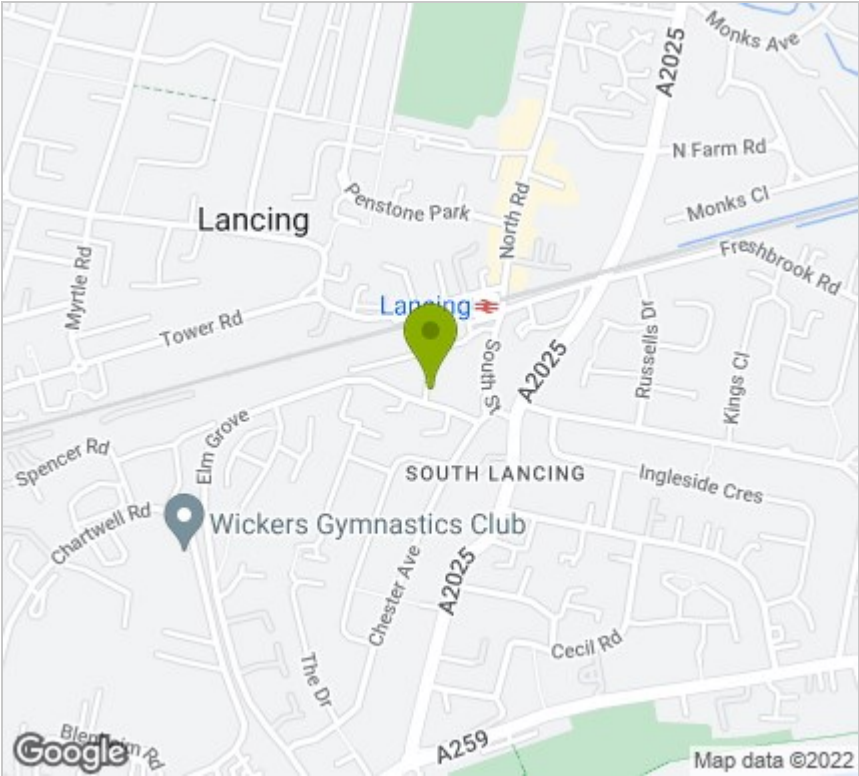


Viewing

Please contact our Worthing Office on 01903 958770 if you wish to arrange a viewing appointment for this property or require further information.

These particulars, whilst believed to be accurate are set out as a general outline only for guidance and do not constitute any part of an offer or contract. Intending purchasers should not rely on them as statements of representation of fact, but must satisfy themselves by inspection or otherwise as to their accuracy. No person in this firms employment has the authority to make or give any representation or warranty in respect of the property.

Area Map



Energy Efficiency Graph

